









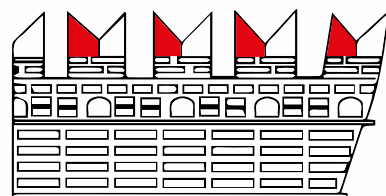
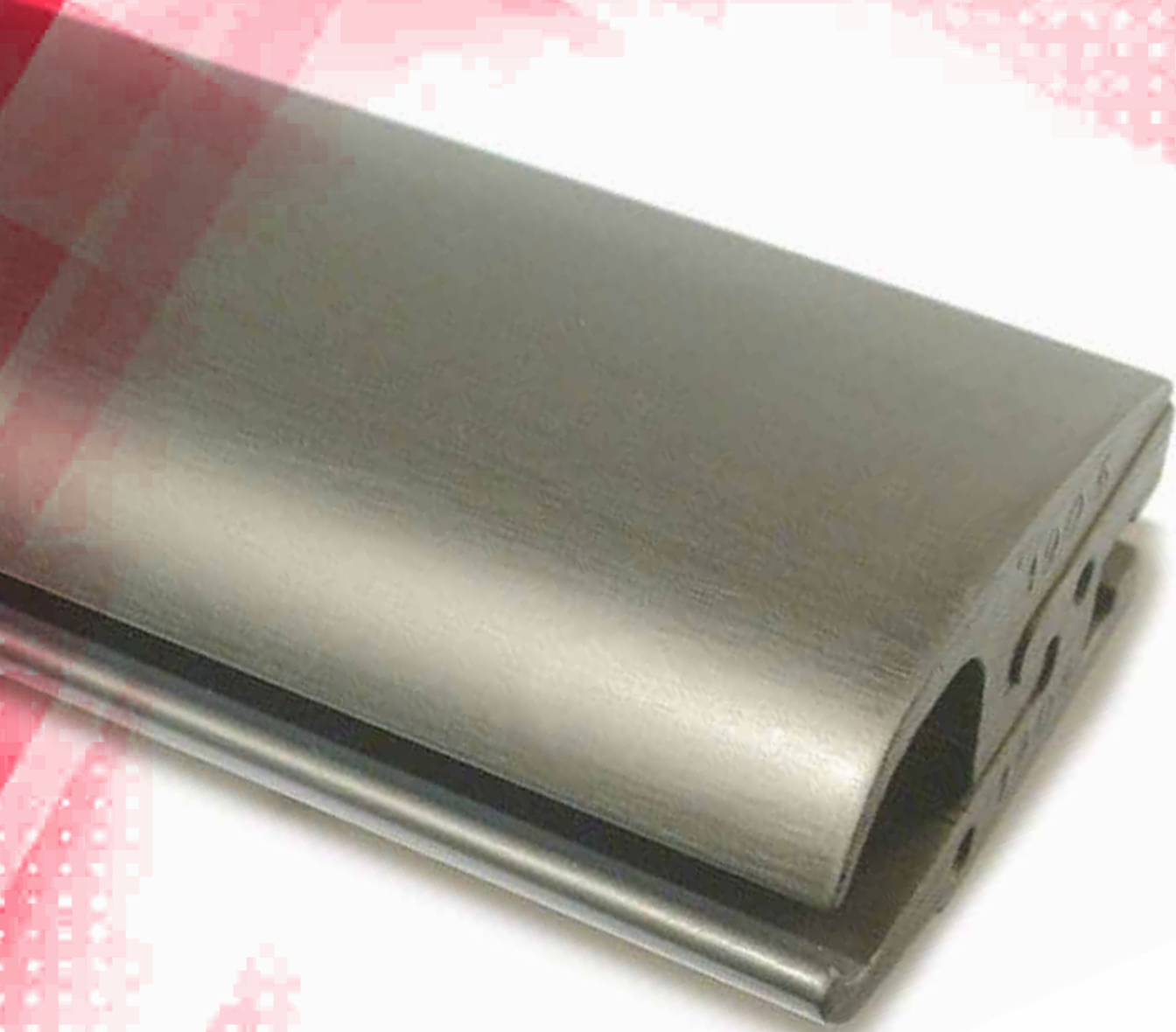
# FULL WIDTH TEMPLE BARS

<p><b>FWT - 101</b>                      MATERIAL                      SURFACE                      DIAMETER/CODE</p>	<p>Syntetic nylon                      Smooth                      08 mm <b>FWOIRN0080</b>                      10 mm <b>FWOIRN0100</b>                      12 mm <b>FWOIRN0120</b>                      14 mm <b>FWOIRN0140</b>                      16 mm <b>FWOIRN0160</b>                      18 mm <b>FWOIRN0180</b>                      20 mm <b>FWOIRN0200</b></p>	
<p><b>FWT - 102</b>                      MATERIAL                      SURFACE                      DIAMETER/PITCH /CODE</p>	<p>Syntetic nylon                      Threaded                      09 mm 1.25 <b>FWOIRNT09125</b>                      10 mm 1.00 <b>FWOIRNT10100</b>                      10 mm 1.25 <b>FWOIRNT10125</b>                      10 mm 1.50 <b>FWOIRNT10150</b>                      12 mm 1.00 <b>FWOIRNT12100</b>                      12 mm 1.25 <b>FWOIRNT12125</b>                      12 mm 1.50 <b>FWOIRNT12150</b>                      14 mm 1.00 <b>FWOIRNT14100</b>                      14 mm 1.50 <b>FWOIRNT14150</b>                      14 mm 2.00 <b>FWOIRNT14200</b>                      16 mm 1.00 <b>FWOIRNT16100</b>                      16 mm 1.50 <b>FWOIRNT16150</b>                      16 mm 2.00 <b>FWOIRNT16200</b>                      18 mm 1.00 <b>FWOIRNT18100</b>                      18 mm 1.50 <b>FWOIRNT18150</b>                      18 mm 2.00 <b>FWOIRNT18200</b></p>	
<p><b>FWT - 103</b>                      MATERIAL                      SURFACE                      DIAMETER/CODE</p>	<p>Syntetic nylon                      Knurled                      12 mm <b>FWOIRNK120</b>                      14 mm <b>FWOIRNK140</b>                      16 mm <b>FWOIRNK160</b>                      18 mm <b>FWOIRNK180</b></p>	
<p><b>FWT - 104</b>                      MATERIAL                      SURFACE                      DIAMETER/CODE</p>	<p>Polyurethan/hexagonal core                      Smooth                      14 mm <b>FWOIRPE140</b>                      17 mm <b>FWOIRPE170</b></p>	
<p><b>FWT - 105</b>                      MATERIAL                      SURFACE                      DIAMETER/CODE</p>	<p>Polyurethan/ Rounde core                      Smooth                      14 mm <b>FWOIRP0140</b>                      17 mm <b>FWOIRP0170</b></p>	
<p><b>FWT - 106</b>                      MATERIAL                      SURFACE                      DIAMETER/CODE</p>	<p>Steel                      Smooth                      14 mm <b>FWOIRS0140</b>                      16 mm <b>FWOIRS0160</b></p>	
<p><b>FWT - 107</b>                      MATERIAL                      SURFACE                      DIAMETER/CODE</p>	<p>Steel                      Threaded                      14 mm <b>FWOIRST140</b></p>	
<p><b>FWT - 108</b>                      MATERIAL                      SURFACE                      DIAMETER/CODE</p>	<p>Steel                      Knurled                      14 mm <b>FWOIRSK140</b></p>	

# FULL WIDTH TEMPLE

Sistema rapido di apertura/chiusura senza viteria  
Montaggio scorrevole

Quickly open/closed system without screws  
Sliding mounting



**CASTELLO**

OFFICINE dal 1948